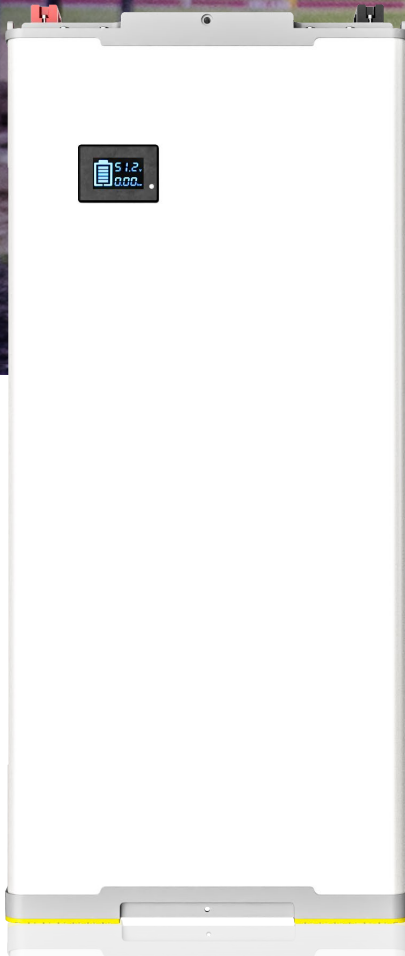


# PV ENERGY STORAGE SYSTEM

## LiFePO<sub>4</sub> Battery Pack

Model: BCT-VI-48-200/250/300



**48V**  
10.24/12.8/15.36kWh



**Household appliances**

Free electricity



**Clean energy**

Using sunlight to achieve clean energy charging can supply power to household appliances.



**Storing energy**

Realize the freedom of electricity consumption in the area where there is no electricity and less electricity.



## Application Scenario

For no city power areas, the battery pack can be charged by solar panels and used for night lighting; For the areas that city power is expensive, the battery pack can be charged during the electricity valley value period, and used at the peak power period; For the areas which power off from time to time, the battery pack can be used as UPS, to avoid information loss caused by sudden power outage. The battery pack is applicable to commercial lighting, industrial lighting, home lighting, outdoor lighting, camping tourism, farming, planting, the night market stalls, etc.

## Product Display

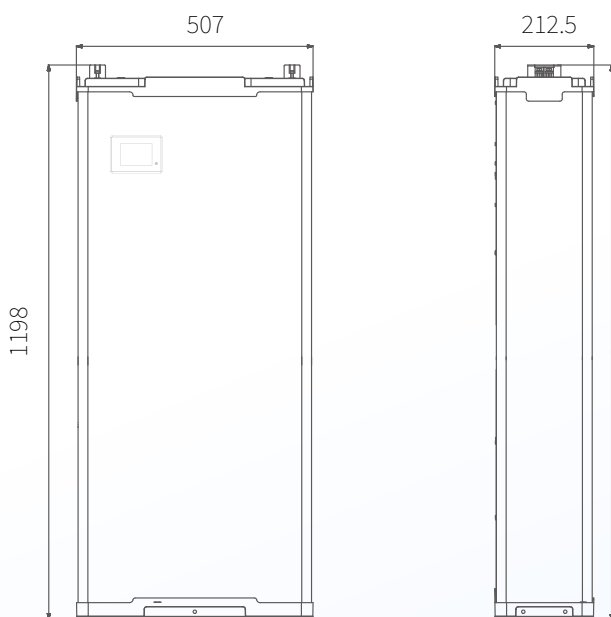


# Technical Parameters

Basic Specifications	Nominal Capacity	200/250/300Ah	Battery	Cell Type	LiFePO <sub>4</sub> Battery/LFP
	Nominal Voltage	48V(51.2V)		Storage Temperature Range	Short-Term -20°C-40°C(Within 1 month) Long-term 10°C-35°C(Within 1 year)
	Electricity(kWh)	10.24/12.8/15.36kWh		Operating Temperature Range	-15°C-60°C
Input	Full charge Voltage	58.4V		Recommended Temperature range	10°C-40°C
	Maximum Charging Voltage	60V		Storage Humidity	≤75% RH
	Input Voltage Range	58V-60V		Atmospheric Pressure	Below the elevation of 5000m
	Continuously Use Input Current	100A		Self-Discharge ( 25°)	< 3%/Month
	Maximum Solar Panel Input Current	100A		Depth of Discharge	> 80%
	Rshoot Delay Protection	1000ms		C-rate Discharge	< 0.8C
Output	Continuously Use Output Current	100A		Cycle Life	> 6000 times (< 0.5c)
	Discharge Cut-off Voltage	44V-46V	Other	Certification Standards	UN38.3/CE/MSDS/DGM
	Over-Discharge Delay Protection	1000ms		Product Size	1198±2mm×507±2mm×212±2mm
	Short Circuit Protection Delay	300us			
	Short Circuit Protection Recovery	Disconnect load			
	Instant Start Current	300A			
	Instant Start Current Time	10S			

## Product Size

Unit: mm

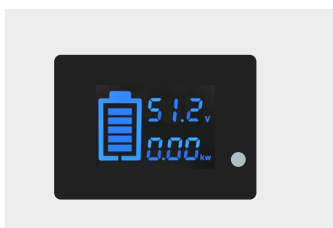


## Product advantages 1



**LiFePO<sub>4</sub> Battery**

Stable discharge, long cycle life, safe and environmental protection, high safety performance.



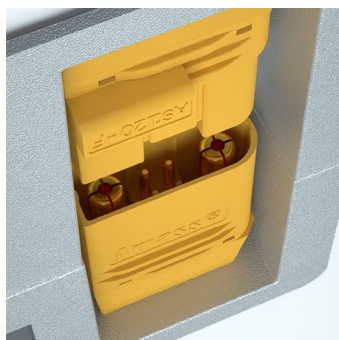
**Screen**

Observe the power usage at any time.



**Binding Post**

Insulated flame retardant, fast and efficient.



**Military Aviation Plug**

Never oxidize in high temperature, high humidity and high-salt environment; No risk of thermal runaway and fire

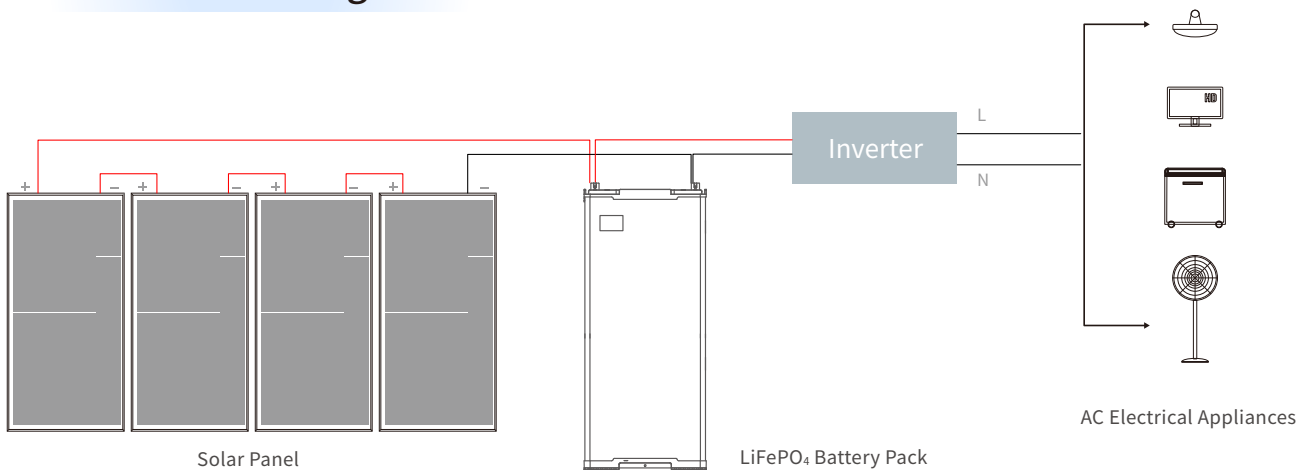


**Rubber Feet Pad**

The bottom of battery is equipped with rubber feet pad to increase safety and play roles of shock-proof buffer, anti-static, electrical insulation and soon.

- All in one mould design and production, easy to install.
- Integrated packaging, safe and convenient to transport.
- Wide voltage input, when unexpected high voltage input, can effectively block the high voltage, so that the BMS of the battery will not be broken down, greatly reducing the risk of thermal runaway combustion of lithium battery.
- Compact appearance design, extremely compressed product thickness, greatly reducing space occupancy.
- High quality aluminium magnesium alloy, anti-corrosion, substantial, durable, artistic, practical.
- Integrated charging and storage, reduce wiring, installation and other work, and facilitate user operation.

### Product advantages 2



Store your electric energy to cope with the evening peak or power outage.

